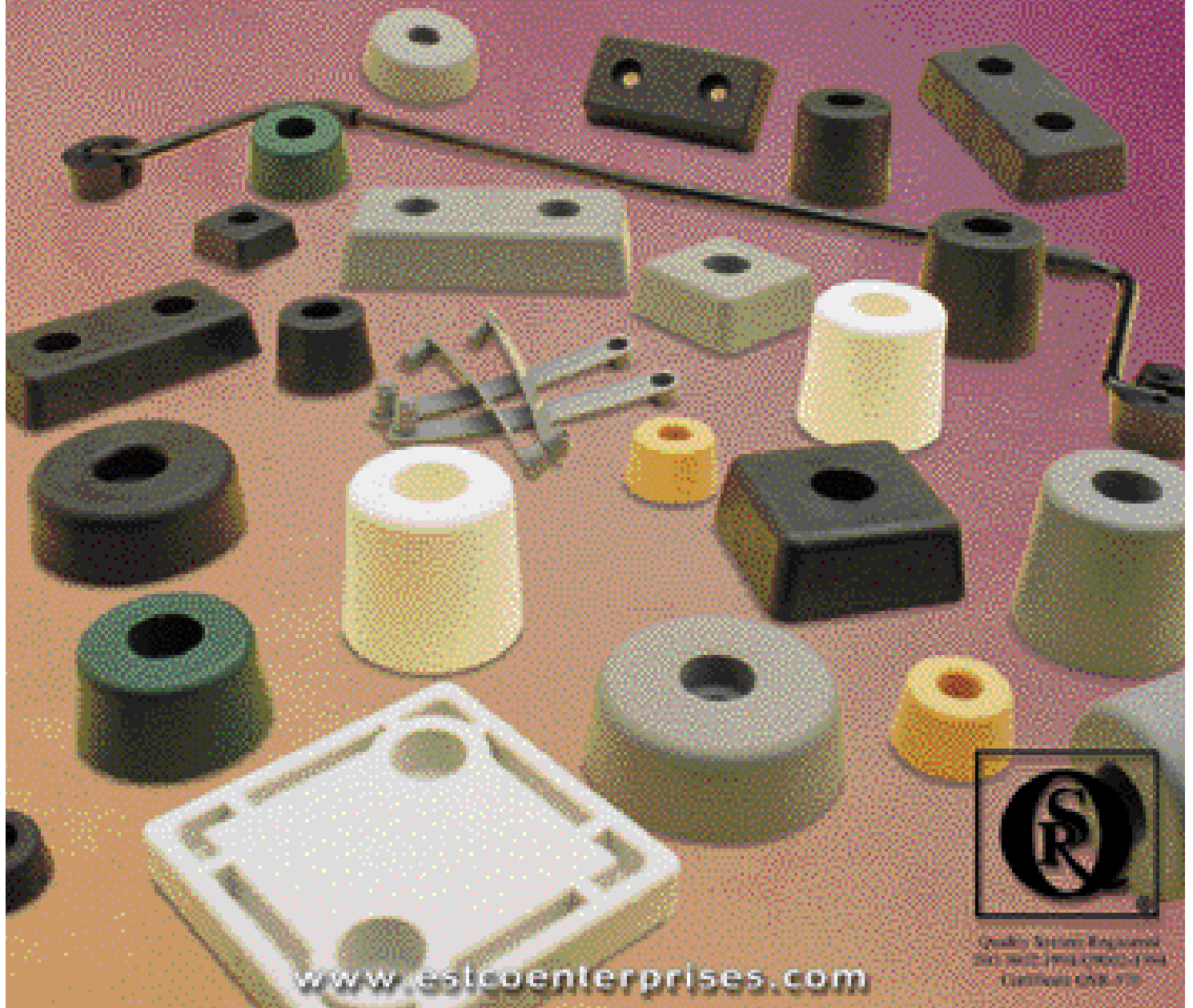


ESTCO

ENTERPRISES, INC.

**YOU NOW HAVE AN
ALTERNATIVE!**

**INJECTION MOLDED
THERMOPLASTIC RUBBER FEET**



www.estcoenterprises.com



Quality System Engineers
200 West 19th Street, Suite 104
Culver City, CA 90230



Since 1970, Estco has been providing a broad range of customers with quality product, on time deliveries and the most competitive pricing available in the industry. Our goal is very simple - do what it takes to EARN your business.

Although we have thousands of molds and dies available on a no-charge basis, we also pride ourselves in our ability to custom tool items - whether it be a single cavity prototype tool for part evaluation or a 400 cavity production tool. Our experienced staff can not only assist you with the cavitation of your tool, but also with the proper selection of the material for your specific application. This will allow you the most economical approach for your project. Send us a sketch, print or sample of an existing part and we will provide you with a customized quotation.

We look forward to hearing from you in the near future, and thank you for considering ESTCO as your supplier.



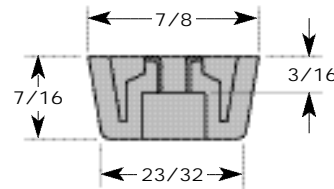
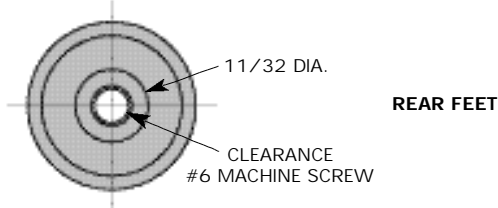
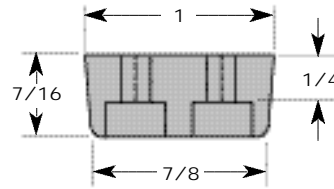
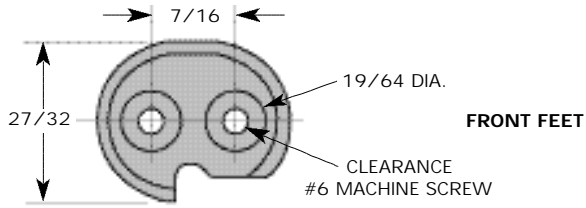
ESTCO
ENTERPRISES, INC.
1549 Simpson Way Escondido, CA 92029
800.696.7826 or 760.439.8745 Fax: 760.439.9117

Estco Enterprises, Incorporated QUALITY POLICY STATEMENT

The goal of Estco Enterprises is to commit to fulfilling our customers current and future expectations for quality, on time deliveries, customer service and cost efficiencies. To support this goal, all Estco Enterprises' employees have adopted a company-wide philosophy of open communication, continuous improvement of the entrepreneurial processes and a dedication to achieve the highest quality system without compromise.

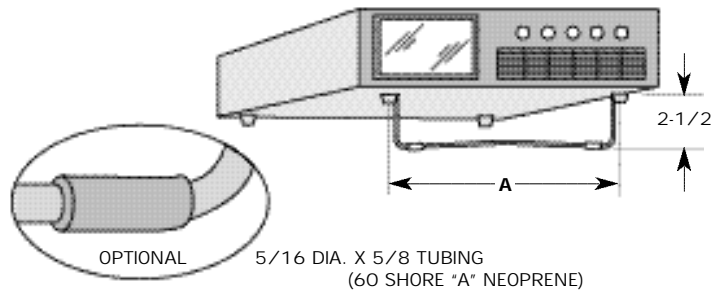
ISO 9002 Certified

ESTCO Collapsible Tilt Stands



Set consists of four low-profile molded feet and steel tilt leg. When not in use, the steel leg folds flat against cabinet base for transportation, storage or stacking. Skid resistant rear feet help keep instrument in place without marking surface. Leg may be furnished with flat black epoxy finish on special order. Optional neoprene tubing on leg provides traction and protects surface of table.

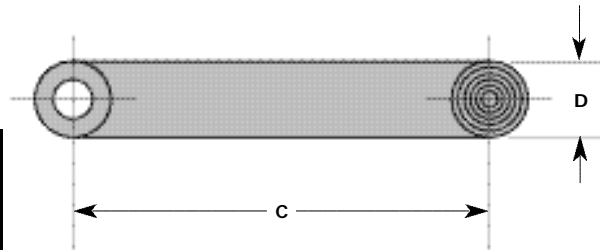
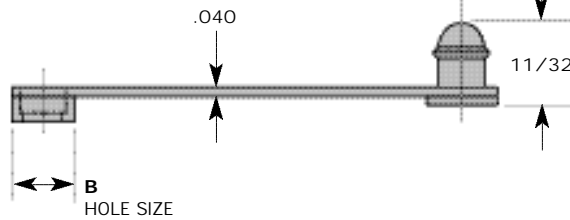
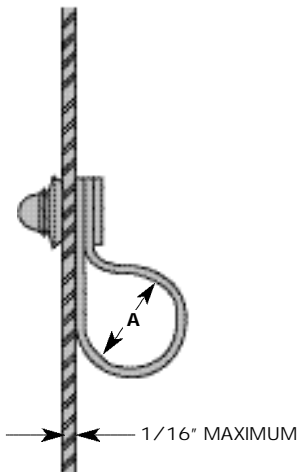
PART NUMBER	FEET MOUNTING CENTERS A
CTS5-1/2	5-1/2
CTS7	7
CTS10	10
CTS12	10
CTS15-1/2	15-1/2



MATERIAL
6/6 Nylon (Front Feet), Thermoplastic Rubber (Rear Feet), Steel (Leg)

STOCK COLOR
Black (Feet), Bright Chrome (Leg)

ESTCO Cable Straps



Designed as a quick and efficient method for attaching small diameter cables to sheet metal. Simply snap the ring end into the specified diameter hole, position wiring, fold strap over and lock in place. Available in any color on special order.

MATERIAL
Ethylene-Vinyl Acetate Copolymer

STOCK COLOR
Grey

PART NUMBER	A	B	C	D
3-4-1	1/4	3/16	1-1/4	1/4
4-4-1	1/4	1/4	1-1/4	5/16
4-7-1	3/8	1/4	1-3/4	5/16
4-10-1	9/16	1/4	2-3/8	5/16

ESTCO Cabinet Feet

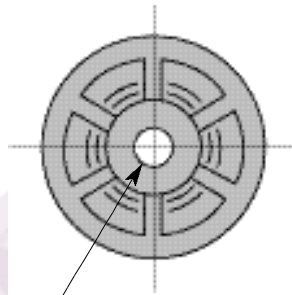


Molded from "Thermoplastic Rubber", Cabinet Feet provide high traction, excellent shock absorbing qualities and, unlike natural rubber, they do not mark surfaces. A nickel plated steel insert absorbs the total fastener load allowing the foot to be mounted using machine screws or rivets without causing distortion to the foot itself.

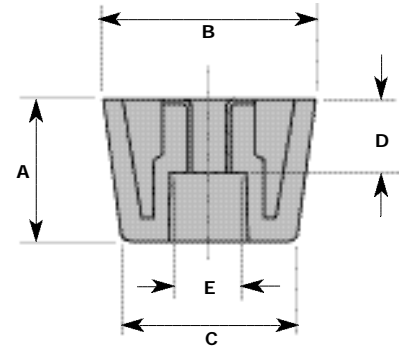
These feet offer excellent resistance to ozone and aging with good to excellent resistance to most chemicals. Available in any color on special order.

MATERIAL
Thermoplastic Rubber

STOCK COLOR
Grey or Black,
Custom Colors Available.



"F"
MACHINE SCREW SIZE



Recommended maximum pounds were established using 85 Shore "A" hardness composition at normal room temperatures.

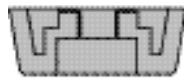
ILLUSTRATED IN ACTUAL SIZES



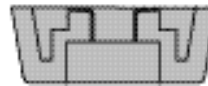
MF4



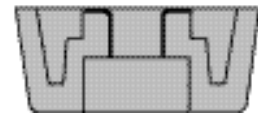
MF6



MF6-1



MF8

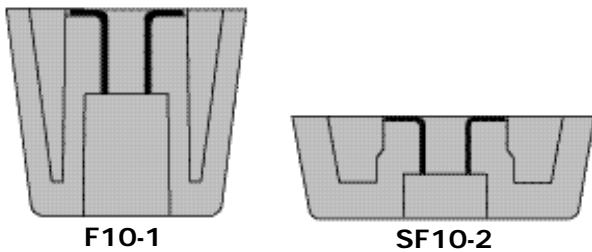
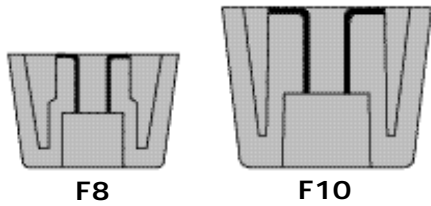
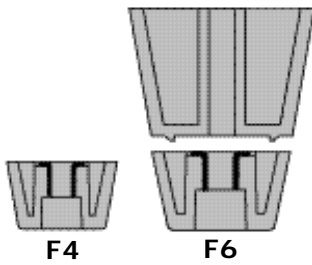


MF10

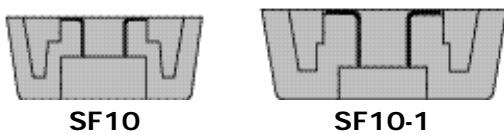
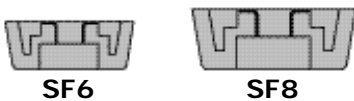
PART NUMBER	RECOMMENDED MAXIMUM LBS. PER 4 FEET	DIMENSIONS						FASTENER	HEAD TYPE
		A	B	C	D	E	F		
F4	15	3/8	9/16	7/16	3/16	7/32	#4	Round Head	
F6	35	7/16	3/4	19/32	3/16	17/64	#6	Round Head	
F8	65	5/8	15/16	23/32	19/64	23/64	#8	Round Head	
F10	100	7/8	1-1/8	11/16	31/64	15/32	#10	Truss Head	
F10-1	120	1-1/8	1-1/4	1	31/64	15/32	#10	Truss Head	
MF4	25	5/16	5/8	1/2	3/16	9/32	#4	Truss Head	
MF6	40	3/8	3/4	5/8	3/16	11/32	#6	Truss Head	
MF6-1	60	7/16	7/8	23/32	3/16	11/32	#6	Truss Head	
MF8	90	17/32	1-1/16	7/8	19/64	13/32	#8	Truss Head	
MF-10	130	5/8	1-1/4	1-1/32	5/16	15/32	#10	Truss Head	
SF6	25	1/4	11/16	19/32	1/8	11/32	#6	Truss Head	
SF8	40	5/16	7/8	3/4	1/8	13/32	#8	Truss Head	
SF10	80	7/16	1-1/16	15/16	13/64	15/32	#10	Truss Head	
SF10-1	135	1/2	1-5/16	1-1/8	5/16	15/32	#10	Truss Head	
SF10-2	200	9/16	1-5/8	1-7/16	5/16	15/32	#10	Truss Head	
L6	...	11/16	1	3/4	



L6
EXTENSION LEG
(POLYPROPYLENE)



ILLUSTRATED IN ACTUAL SIZES



PHYSICAL PROPERTIES	ASTM TEST METHOD	TEST UNITS U.S. (SI)	TEST TEMP. °F (°C)	
Hardness	D-2240	5 sec. Shore	77 (25)	87A
Specific Gravity	D-297	-	77 (25)	0.96
Tensile Strength	D-412	psi (MPa)	77 (25)	2300 (15.9)
Ultimate Elongation	D-412	%	77 (25)	530
100% Modulus	D-412	psi (MPa)	77 (25)	1000 (6.9)
Tear Strength	D-624	pli (kN/m) pli (kN/m)	77 (25) 212 (100)	278 (48.7) 133 (23.3)
Tension Set	D-412	%	77 (25)	33
Compression Set, 168 Hrs	D-395	%	77 (25) 212 (100)	36 58
Flex Fatigue ³		Cycles to fail	77 (25)	-
Brittle Point	D-746	°F (°C)	-	-78 (-61)
Abrasion	D-1630	NBS Index, %	77 (25)	201

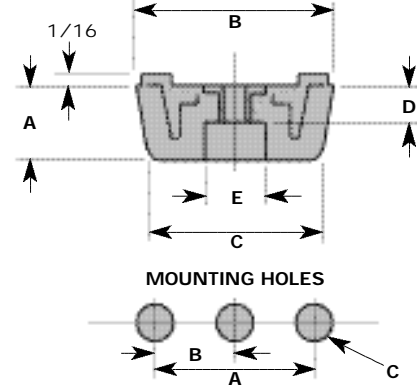
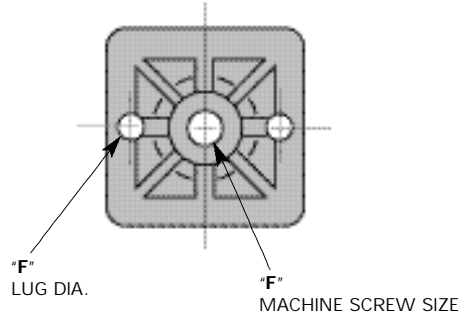
ESTCO Square Feet



Departing from established and existing shapes of feet used in the past, we are now offering square and rectangular bumpers in the same high quality thermoplastic material used in the cabinet feet. These contemporary designs will add quality and dependability to your new or existing products. We invite your sample requests.

MATERIAL
Thermoplastic Rubber

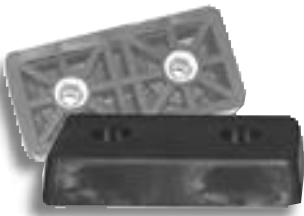
STOCK COLOR
Grey or Black,
Custom Colors Available.



PART NUMBER	A ± .020	B ± .010	C ±.005 -.000
SQF6	.656 (21/32)	.328	.169 (#18 DRILL)
SQF6-1	.781 (25/32)	.390	.169 (#18 DRILL)
SQF8	.906 (29/32)	.453	.196 (#9 DRILL)
SQF10	1.062 (1-1/16)	.531	.221 (#2 DRILL)
SQF10-1	1.187 (1-3/16)	.593	.221 (#2 DRILL)

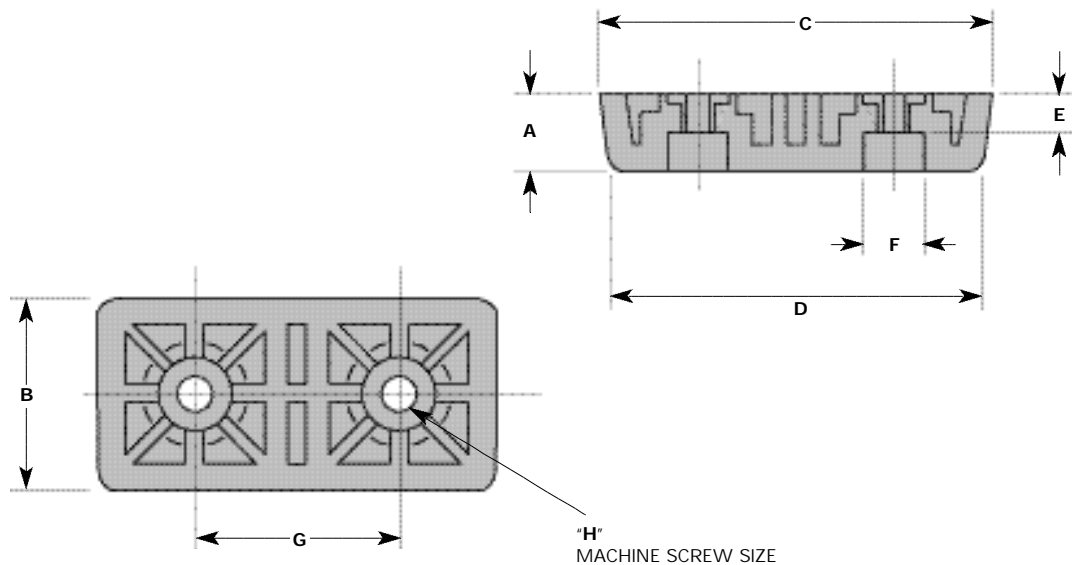
PART NUMBER	A Height	B Width	C	D	E	F Lug Dia	G Machine Screw Size
SQF6	11/12	7/8	51/64	3/16	11/32	.149	# 6 TRUSS HEAD
SQF6-1	25/64	1	29/32	3/16	11/32	.149	# 6 TRUSSHEAD
SQF8	15/32	1-3/16	1-5/64	19/64	27/64	.177	# 8 TRUSSHEAD
SQF10	17/32	1-3/8	1-7/32	5/16	31/64	.201	#10 TRUSS HEAD
SQF10-1	19/32	1-1/2	1-11/32	5/16	31/64	.201	#10 TRUSSHEAD

ESTCO Rectangular Feet



All general purpose grades of SANTOPRENE® rubber support combustion in air. However, the burning rate is slow, and all grades will pass FMVSS302. In addition, all of these grades are rated slow-burning, when tested according to U.L. 94 H.B.

For applications requiring a thermoplastic rubber with resistance to the initiation and spread of fire, consider a flame-retardant grade of SANTOPRENE rubber.



PART NUMBER	A Height	B Width	C Length	D	E	F	G	H Ma Scr Sz
RF6	11/32	7/8	1-3/4	1-21/32	3/16	11/32	7/8	# 6 Truss Head
RF6-1	25/64	1	2	1-29/32	3/16	11/32	1	# 6 Truss Head
RF8	15/32	1-3/16	2-3/8	2-1/4	19/64	27/64	1-3/16	# 8 Truss Head
RF10	17/32	1-3/8	2-3/4	2-19/32	5/16	31/64	1-3/8	#10 Truss Head
RF10-1	19/32	1-1/2	3	2-27/32	5/16	31/64	1-1/2	#10 Truss Head

Material Information

SANTOPRENE® thermoplastic rubber is a family of advanced elastomers which successfully combines performance characteristics of vulcanized rubber, such as heat resistance and low compression set, with the processing ease of thermoplastics. It has been developed by Monsanto from years of experience as a leading manufacturer of both rubber chemicals and thermoplastics. SANTOPRENE® rubber is a fully vulcanized polyolefinic material. It is produced by a proprietary dynamic vulcanization process which produces fully cured rubber particles dispersed throughout a continuous matrix of thermoplastic material.

The physical properties of SANTOPRENE® rubber bear out its suitability as a cost effective replacement for thermoset rubbers. The combination of mechanical properties, fluid resistance, flame retardance and environmental stability all make SANTOPRENE® rubber superior for a broad spectrum of end-uses.

Some of the mechanical properties of SANTOPRENE® are as follows:

HARDNESS of SANTOPRENE® rubber permits the design and manufacture of parts ranging from flexible to semi-rigid, while maintaining a broad range of favorable physical properties.

SPECIFIC GRAVITY of SANTOPRENE® rubber compares quite favorably to the higher values of vulcanized specialty rubbers such as neoprene, chlorosulfonated polyethylene and EPDM. Thus on a unit volume basis, a much smaller weight of SANTOPRENE® rubber would be needed for a specific application.

TENSILE PROPERTIES of SANTOPRENE® rubber-tensile strength, ultimate elongation and 100% modulus-vary by grade. The harder grades have higher tensile strength and elongation than the softer grades.

TEAR STRENGTH of SANTOPRENE® rubber is high. It allows use in a wide variety of applications now employing conventional thermoset rubbers. The good hot-tear strength enables easy removal of molded parts from injection and blow molding equipment thus permitting fast molding cycles.

TENSION AND COMPRESSION SET RESISTANCE of SANTOPRENE® rubber represents a major breakthrough for thermoplastic materials. Resistance to tension set after a 100% tensile elongation is good for all grades of SANTOPRENE® rubber. Resistance to compression set after a constant deflection is excellent, particularly at elevated temperatures and for extended periods of time. The low compression and tension set of the softer grades make them well-suited for many applications which presently are met only with vulcanized rubbers.

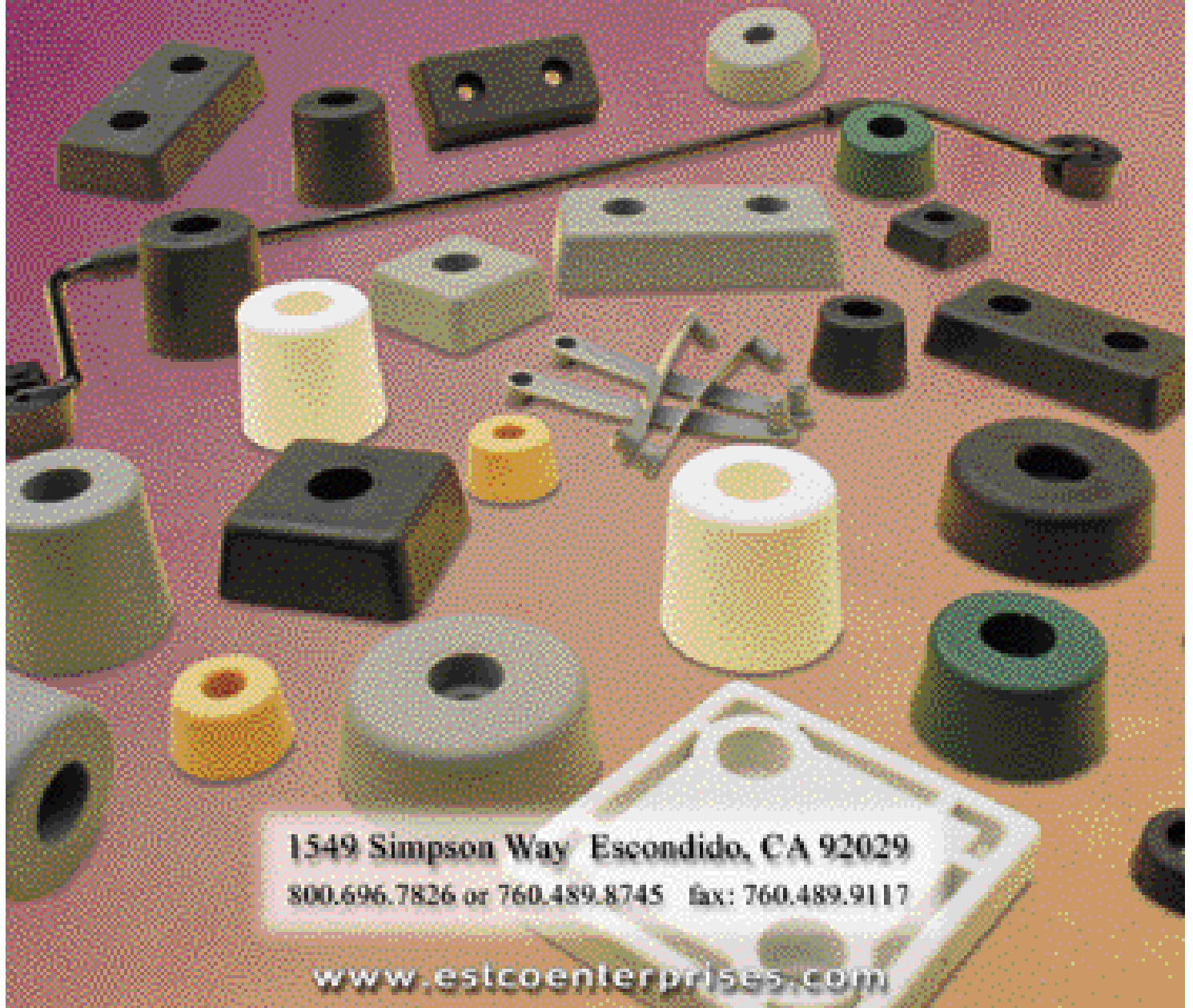
TEAR FATIGUE of SANTOPRENE® rubber is extremely high compared to many thermoset rubber compounds. The softer grades are superior in fatigue resistance to natural rubber specifically compounded for high fatigue resistance.

BRITTLE POINT for general purpose grades of SANTOPRENE® rubber is well below - 40F. All hardness grades have good low temperature flexibility. Naturally, the softer grades have the greater degree of low-temperature flexibility.

ABRASION RESISTANCE of SANTOPRENE® rubber is superior to many vulcanized rubber compounds in a variety of applications. Abrasion resistance is heavily dependent on the nature of the service application and conditions.

Request our Standard
Catalogs on Molded and
Extruded Rubber Products

Contact Customer Sales



1549 Simpson Way Escondido, CA 92029

800.696.7826 or 760.489.8745 fax: 760.489.9117

www.estcoenterprises.com